

High-density Pizza-box GPON OLT

# GP3600-C Series

## Product Overview

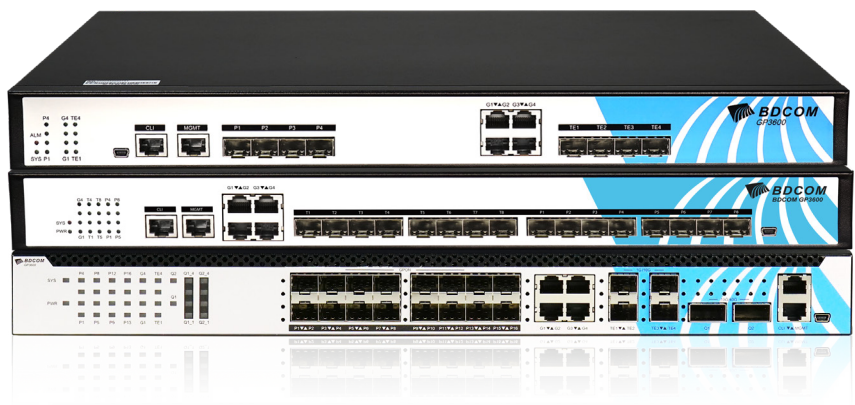
BDCOM GP3600-C Series complies with ITU-T G.984/G.988 and meets requirements about GPON OLT in Network Access Technical Requirements. It fully supports CTC2.0, automatic discovery and cooperation with ONUs of different manufacturers.

BDCOM GP3600-C Series supports the Asymmetric uplink 1.25Gbps/downlink 2.5Gbps PON transmission rate, efficient bandwidth usage and Ethernet services, helping carriers to provide reliable services to their users.

Its coupling ratio ups to 1:128, and its support of different hybrid ONU networks minimizes the carrier's investment.

BDCOM GP3600-C Series supports routing functions such as RIP, OSPF and BGP.

BDCOM GP3600-C Series, based on the edge-cutting technologies, is strong in functions and QoS guarantee, SLA and DBA can be easily listed out.



## Product Characteristics

**GPON:** Abiding by ITU-T G.984/G.988, BDCOM GP3600-C Series OLT meets relevant requirements of GPON OLT regulated in Network Access Technical Requirements and China Telecom GPON Technical Requirements CTC2.0;

**System capacity:** GP3600-C Series supports 4/16 GPON ports.

**Uplink interface:** GP3600-C Series is equipped with 4 Gigabit RJ45 ports, 4/8 GE SFP+ ports and 2 40GE QSFP+ ports.

**Dimensions:** 1U, occupies a small space.

**Environmental protection:** low power consumption and low operating cost.

**Bus optical fiber protection:** the link can be automatically switched when trouble occurs in the optical fiber;

**Power supply:** supports dual-AC, dual-DC and AC/DC power supply. The power supply supports modularized design, hot-swap and EMC-3 standard. It well adapts to the environment.



Support 1.25Gbps uplink and 2.5Gbps downlink bandwidth



Efficient bandwidth usage and Ethernet services



The Splitting ratio ups to 1:128

## Model Lists

### GP3600-04C

Pizza-box GPON OLT



- 4-Port GPON
- 4-Port Gigabit RJ45
- 4-Port 10G SFP+

### GP3600-08C

High-density Pizza-box GPON OLT



- 8-Port GPON
- 4-Port Gigabit RJ45
- 8-Port 10G SFP+

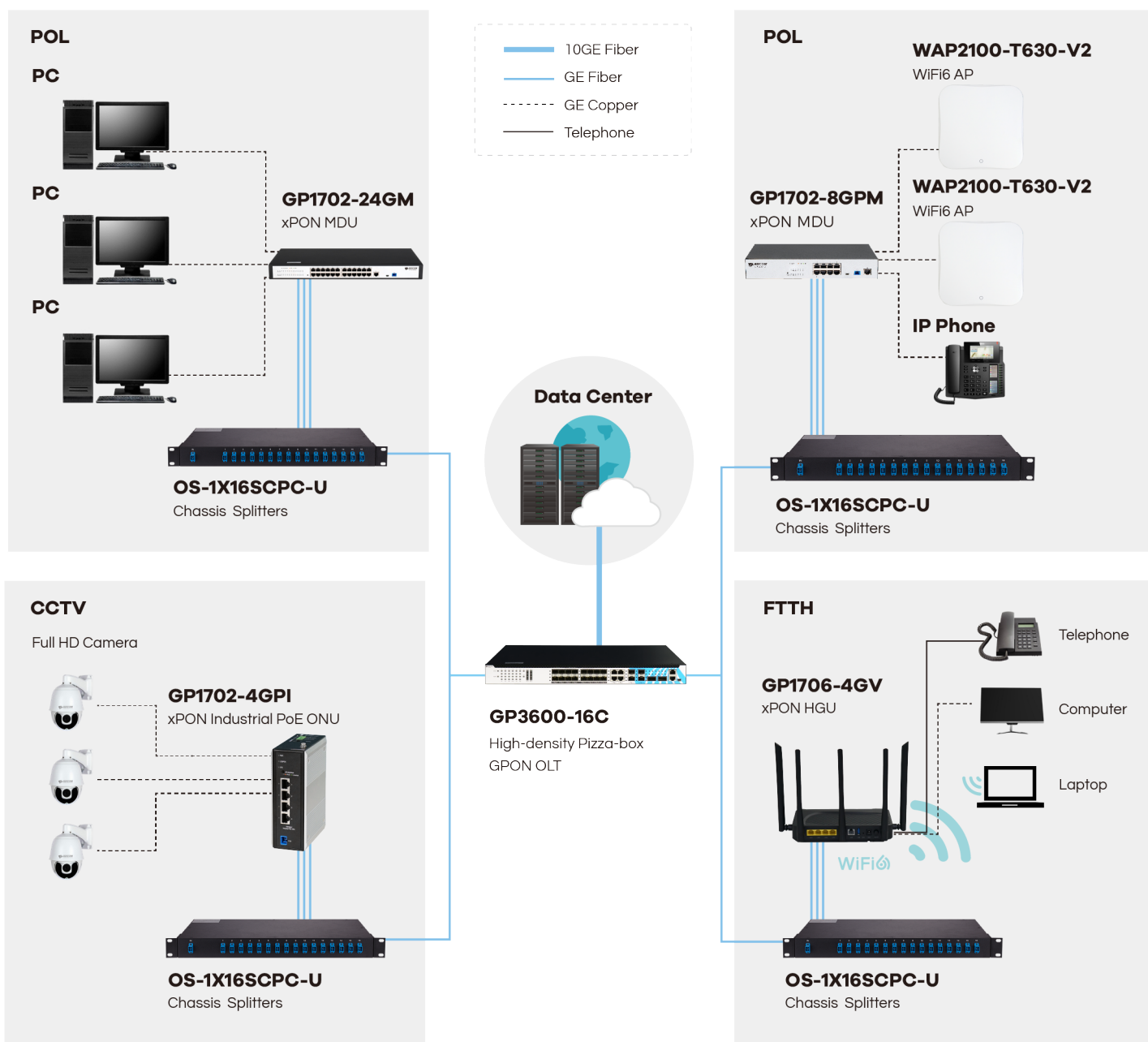
### GP3600-16C

High-density Pizza-box GPON OLT



- 16-Port GPON
- 4-Port Gigabit RJ45
- 4-Port 10G SFP+
- 2-Port 40G QSFP+

## Application Diagram



## System Performance

Item	GP3600-04C	GP3600-08C	GP3600-16C
Service interface			
PON ports	4	8	16
Gigabit RJ45	4	4	4
10G SFP+	4	8	4
40G QSFP+	/	/	2
Supported GPON SFP module	Class C+/C++/C+++/D+		
Management interface			
RJ45 console	1		
Mini-USB console	1		
Out-of-Band	1		
System capacity			
DRAM (GB)	4		
Flash (GB)	2		
Backplane (Gbps)	216Gbps	880Gbps	880Gbps
MAC table	32K	128K	128K
Jumbo frame (KB)	9		
IPv4 routing table	8K		
IPv6 routing table	2K		
Active VLAN	4,094		
SVI number	1K		
Forwarding mode	Store-and-forward		

## Technical Specifications

### Standards

- ITU-T G.984/G.988
- IEEE 802.11D, Spanning Tree
- IEEE 802.1Q, VLAN
- IEEE 802.1w, RSTP
- IEEE 802.3ad physical link static/dynamic aggregation (LACP), Ethernet - II

### VLAN

- Port/IP/Protocol/MAC-based VLAN
- 4K VLAN
- QinQ and flexible QinQ

### Multicast

- L2 multicast
- IGMP snooping
- MLD snooping
- Fast-leave

### Layer 3 Function

- Static route
- RIPv1/v2
- OSPF
- BGP

### QoS

- Backpressure flow control (half duplex)
- IEEE 802.3x flow control (full duplex)
- IEEE 802.1p, CoS
- WRR, SP and FIFO queue schedule
- Limiting the uplink/downlink rate based on each ONU
- DBA and SLA

### Reliability

- Unidirectional Link Detection (UDLD)
- Hot swap of the EPON optical module
- Optical path protection of EPON (type B/C, hand-in-hand)
- Abnormal luminescence ONU detection such as long luminescence
- IEEE 802.3ad LACP

### DHCP Function

- Server/Relay/Client
- DHCP snooping
- DHCP option 66,67,82
- DAI
- IP source guard

### Network Security

- L2~4 ACL
- Flow-based ACL
- MAC limitation
- MAC sticky
- Port isolation
- Packet storm control
- Transmission data encryption on the PON interface
- Anti attack for DDOS, TCP-SYN-flood, UDP-flood, ARP-flood, etc.

### Management

- Various management modes such as CLI, Telnet, SSH, HTTP, SSL and SNMP
- ISSU
- FTP/TFTP
- SPAN/RSPAN
- NTP

### Network Availability

- STP/RSTP/MSTP
- BPDU guard
- EAPS

## Physical Characteristics

Item		GP3600-04C	GP3600-08C	GP3600-16C
Power supply				
AC (V)		100~240		
DC (V)		36~72		
Power slots		1 fixed AC	2	2
Max. consumption (W)		35	60	70
Total output BTU (note: 1000 BTU/hr = 293W)		170.6	204.8	238.9
Cooling system				
Fan number		3	3	4
Air-flow		Left-right	Left-right	Front-back
Noise@25°C(dBA)		< 50	< 50	< 55
Appearance				
Chassis	Dimensions(WxDxH mm)	440.5 x 280 x 44.5	442x280x44	442x280x44
	Weight (Kg)(empty)	3.8	4.2	4.5
Package	Dimensions(WxDxH mm)	576 x 448 x 94	576 x 448 x 94	576 x 448 x 94
	Weight (Kg)	4.8	5.2	5.5
Environmental specifications				
Operating	Temperature	0~50°C		
	Humidity (non-condensing )	10%~85%		
Storage	Temperature	-40°C~80°C		
	Humidity (non-condensing )	5%-95%		
Accessories				
Parts			Power cord, rackmount kits, console cable	
Reliability				
MTBF (Hr)			200,000	

## Ordering Information

Model	Description
GP3600-04C	4-port GPON OLT with 4-port fixed PON (excluding OLT SFP module) + 4-port GE RJ45 + 4-port 10G SFP+; (built-in single AC100~240V power supply, 19-inch rack-mounted installation)
GP3600-08C	8-Port GPON OLT with 4-Port Gigabit RJ45 + 8-Port 10G SFP+ (2 power slots, single hot-swap AC 100-240V power supply, 19-inch rack-mounted installation)
GP3600-16C	16-Port GPON OLT with 4-Port Gigabit RJ45 + 4-Port 10G SFP+ 2-Port 40G QSFP+ (2 power slots, single hot-swap AC 100-240V power supply, 19-inch rack-mounted installation)
PWR-100-DC	Hot-swap DC power supply for OLT (Max Power 100W, DC-36 ~ -72V input)
PWR-100-AC	Hot-swap AC power supply for OLT (Max Power 100W, AC100~240V input)
OLT-GSFP-C+	OLT SFP module, Class C+ standard, downlink 2.5G/uplink 1.25G, TX wavelength 1490nm, RX wavelength 1310nm, SC interface
OLT-GSFP-C++	OLT SFP module, Class C++ standard, downlink 2.5G/uplink 1.25G, TX wavelength 1490nm, RX wavelength 1310nm, SC interface
OLT-GSFP-C+++	OLT SFP module, Class C+++ standard, downlink 2.5G/uplink 1.25G, TX wavelength 1490nm, RX wavelength 1310nm, SC interface

Copyright © Shanghai Baud Data Communication Co., LTD.2025. All Rights Reserved.

This document is BDCOM Public Information. BDCOM reserves the right to alter, update and otherwise change the information contained in the document from time to time.

